

# Product Datasheet

**Product Name:** Input Metered PDU

**SKU:**AKN113041U

**MODEL:**K12HTJ5-24A3606A1791EES01-2QT

**Product Code:**K12HTJ5-24A3606A1791EES01-2QT

## Overview

The Apislogik Input Metered PDU can monitor input parameters in real-time, such as current, voltage, frequency, power factor, power load, energy measurement, temperature, and humidity. The voltage and current accuracy is  $\pm 1\%$ . The power and energy accuracy is  $\pm 2\%$ . The measured data can be transmitted via the network port.

## Features

### ■ Input

Support for IEC60309, NEMA, UK, SCHUKO, HARTING, TEC etc.

### ■ Output

Support for C13, C19, C39, NEMA, UK, SCHUKO, IEC self-locking socket.

### ■ Hydraulic magnetic circuit breaker

Stable operation in environments with a temperature of 140°F/60°C. Provides respective protection for each branch of output. (Note: Not all models provide hydraulic magnetic circuit breakers)

### ■ Hot-swap LED indicator lights

Customers can replace hot-swap LED indicator lights without powering off the system. (Note: Not all models have hot-swap LED indicator lights)

### ■ Mounting method

Toolless mounting peg and bracket mounting, two types of mounting options are available for selection.

### ■ Hot-swap network management meter

Allows users to replace the NMM (Network Management Meter) without shutting down the PDU.

The NMM supports SNMP V1, V2, V3, HTTP, MODBUS, TELNET, WEB, encryption, password, and authorization options.

## ■ Ports and Cascading

Provides 2 RJ45 ports and 2 RJ11 ports.

The 2 RJ45 ports, one is a 10/100M port, supporting both Ethernet and RS485 with auto-negotiation. The other port is an RS485 cascading port, supporting 1 master and 19 slave devices to be connected in a cascade. Up to 20 PDUs can share a single IP address.

The 2 RJ11 ports consist of 1 temperature and humidity sensor port and 1 leak sensor or smoke sensor port.

## ■ LCD display

Allows local access, providing user interactive display of voltage, current or active power, alarms, configuration information, and more.

## ■ Alarms and logs

Provides real-time remote monitoring of the output power Load . Alarm thresholds can be configured, and both network and visual alarms are available. The logs include the most recent events along with their date and time of occurrence. Up to 100 events are stored and displayed in the logs.

## Specifications

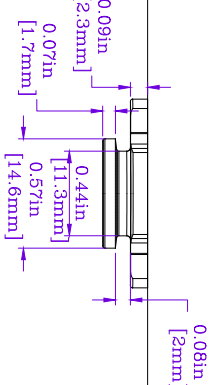
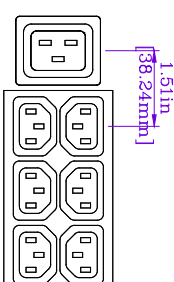
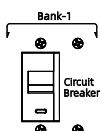
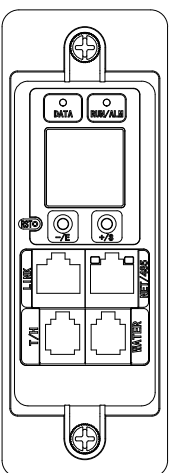
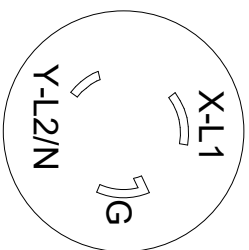
Input Parameters	
Input voltage	200-240 V AC
Max current(phase)	30A
Rate current (phase)	24A
Input frequency	50/60Hz
Power capacity	5KW
Input plug	NEMA L6-30P
Input wire	( 118.11in ) 3*10AWG
Output Parameters	
Output voltage	200-240 V AC
Max current(phase)	30A
Rate current(phase)	24A
Output frequency	50/60Hz
Outlets	(36) UL 320 C13 (6) UL 320 C19
Protective Device	
Circuit breaker	2*20A/2P
Physical Parameters	
Rack mount	0U
Shell color	Black
Shell material	Aluminum Alloy
Power input method	Top feed
Mounting location	Dual-sided

Mounting mode	Bracket / Peg
Dimensions(H*W*D)	70.51 in*2.19 in*1.93 in 1791 mm*55.5 mm*49 mm
Net weight	17.20 lb 7.8 kg
Shipping dimensions(H*W*D)	82.68 in*3.43 in*4.53 in 2100 mm*87 mm*115 mm
<b>Environmental Parameters</b>	
Operating elevation	0-10000 ft 0-3000 m
Operation Temperature	14°F~140 °F -10°C~60°C
Humidity(operation/storage)	5-95%RH, non-condensing
Storage Temperature	-4°F~158 °F -20°C~70 °C
Storage elevation	0-50000 ft 0-15000 m
<b>Compliance</b>	
Certification	FCC、UL、CUL、REACH、RoHS

\* Product Characteristics subject to change without prior notice.

\* Disclaimer: This documentation is not intended as a substitute for and is not to be used for determining suitability or reliability of these products for specific user applications

<b>Version History</b>					
Version	Description	Draft	Review	Approval	Date
V2.0	First version	NAN LI	LQ LI	YH CHEN	07/05/2024

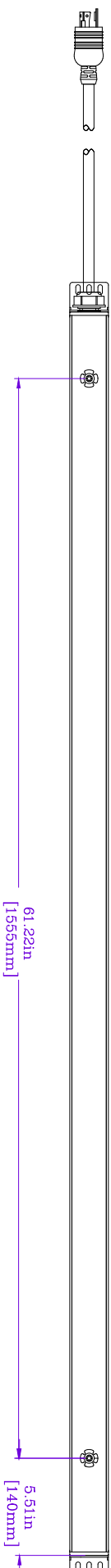
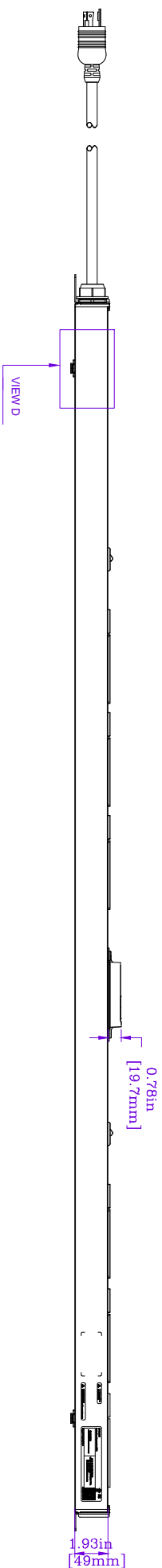
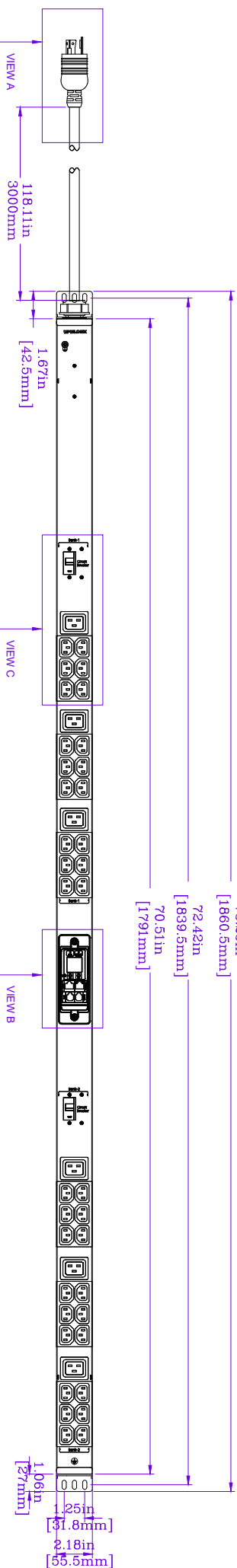


(NEMA L6-30P PLUG-ENLARGED)

[VIEW A](#)

VIEW B

VIEW C

[VIEW D](#)[illegible]

