

Product Datasheet

Product Name: Basic PDU

SKU:AKB036066U

MODEL:K10ATJ7-48A0612A1829GES01-2QT

Product Code:K10ATJ7-48A0612A1829GES01-2QT

Overview

The Apislogik Basic PDU provides rack power distribution via a single input with multiple output receptacles and distributes power from low amperage single-phase circuits to higher-power 3-phase solutions. There are various types of input plugs, output receptacles, and protective devices available for mixing and matching. Installation methods, colors, and sizes can be chosen to meet your specific requirements.

Features

■ Input

Support for IEC60309, NEMA, UK, SCHUKO, HARTING, TEC etc.

■ Output

Support for C13, C19, C39, NEMA, UK, SCHUKO, IEC self-locking socket.

■ Hydraulic magnetic circuit breaker

Stable operation in environments with a temperature of 140°F/60°C. Provides respective protection for each branch of output. (Note: Not all models provide hydraulic magnetic circuit breakers)

■ Hot-swap LED indicator lights

Customers can replace hot-swap LED indicator lights without powering off the system. (Note: Not all models have hot-swap LED indicator lights)

■ Mounting method

Toolless mounting peg and bracket mounting, two types of mounting options are available for selection.

Specifications

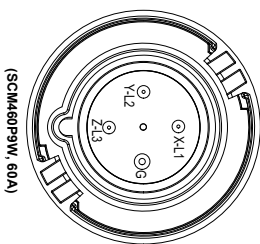
Input Parameters	
Input voltage	200-240 V 3-phase, 3W+G
Max current(phase)	60A
Rate current (phase)	48A
Input frequency	50/60Hz
Power capacity	17 KW
Input plug	SCM460P9W
Input wire	(70.87in) 4*4AWG
Output Parameters	
Output voltage	200-240V AC
Max current(phase)	60A
Rate current(phase)	48A
Output frequency	50/60Hz
Outlets	(6) UL 320 C13 (12) UL 320 C19
Protective Device	
Circuit breaker	6*20A/2P
Physical Parameters	
Rack mount	0U
Shell color	Black
Shell material	Aluminum Alloy
Power input method	Top feed
Mounting location	Dual-sided
Mounting mode	Bracket / Peg
Dimensions(H*W*D)	72.01 in*2.19 in*2.09 in 1829 mm*55.5 mm*53 mm
Net weight	17.6 lb 8 kg
Shipping dimensions(H*W*D)	84.65 in*7.68 in*5.00 in 2150 mm*195 mm*127 mm
Environmental Parameters	
Operating elevation	0-10000 ft 0-3000 m
Operation Temperature	14°F~140 °F -10°C~60°C
Humidity(operation/storage)	5-95%RH, non-condensing
Storage Temperature	-4°F~158 °F -20°C~70 °C
Storage elevation	0-50000 ft 0-15000 m

Compliance	
Certification	UL、CUL、REACH、RoHS

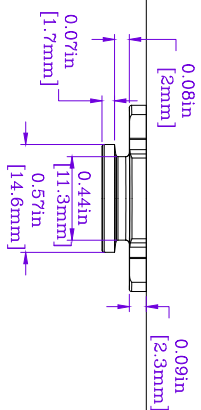
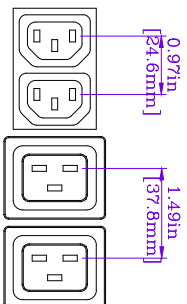
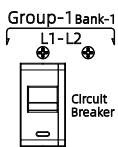
* Product Characteristics subject to change without prior notice.

* Disclaimer: This documentation is not intended as a substitute for and is not to be used for determining suitability or reliability of these products for specific user applications

Version History					
Version	Description	Draft	Review	Approval	Date
V2.0	First version	NAN LI	LQ LI	YH CHEN	07/05/2024



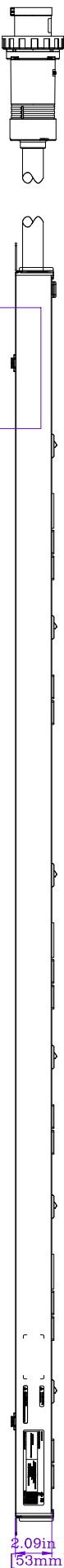
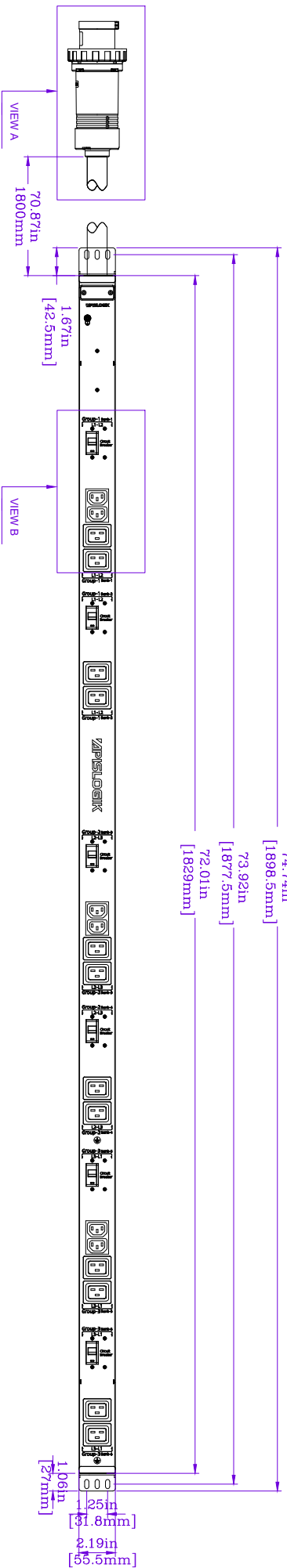
(SCM460P9W, 60A)



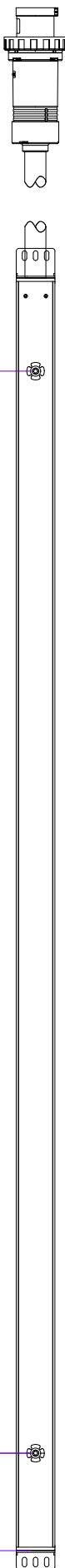
VIEW A

VIEW B

VIEW C



VIEW C



NOTES:

1. INSTALLATION SHALL COMPLY WITH ALL APPLICABLE NATIONAL, STATE AND LOCAL CODES.
2. PLEASE REFER TO PRODUCT DOCUMENTATION FOR FURTHER INFORMATION.
3. UNLESS OTHERWISE SPECIFIED, ALL DIMENSIONS ARE IN INCHES (MILLIMETERS).

Product Name: Basic PDU

Input Cable: 70.87 in 4*4AWG
Outlet: (6) UL 320 C13

(12) UL 320 C19

Endosure Material: Aluminium Alloy

Enclosure Color: Black

Rack Unit: 0U
Incoming Mode: Top Feed

Circuit Breaker: (6) 20A/2P

Enclosure Color: Black

APISLOGIK

DWG NO.	SKU
HWM 0309340508603	AKN03

0000000000	700000047600*ALL
------------	------------------

MODEL
K10AT17 48A0612A1830CEC04 30T

PRODUCT CODE

K10ATJ7-48A0612A1829GES01-2QT

DO NOT SCALE

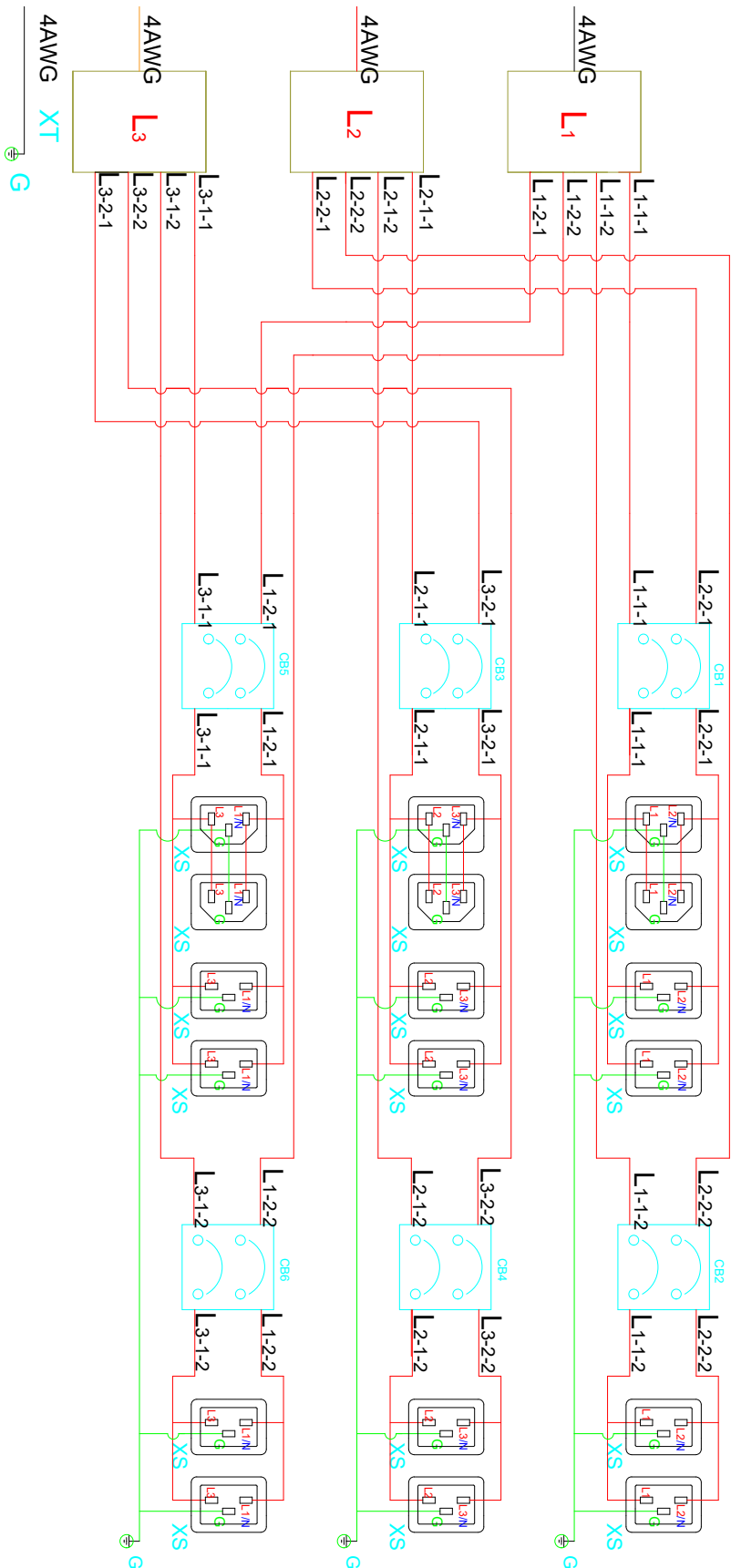
DRAWING

REV.

SHEET 1 OF 2

A

Symbol Interpretation		
XT	Terminal blocks	IN Input
TA	Current transformer	OUT Output
PA	Intelligent meter	F Hot plug lightning protection
XS	jack	CB Circuit breaker
PE	landing	SI/SZ Current transformer Input/output



Note: The color of the connecting line is only for reference to the phase pole, and the actual color is subject to the actual material.

REV.	DESCRIPTION	DRAWN	CHECKED	APPD	DATE	NOTES:	Product Name: Basic PDU	APISLOGIK	DWG NO.	SKU
E						1. INSTALLATION SHALL COMPLY WITH ALL APPLICABLE NATIONAL, STATE AND LOCAL CODES. 2. PLEASE REFER TO PRODUCT DOCUMENTATION FOR FURTHER INFORMATION. 3. UNLESS OTHERWISE SPECIFIED, ALL DIMENSIONS ARE IN INCHES (MILLIMETERS).	Input Cable: 70.87 in 4/4AWG Output: (6) UL 320 C13 (12) UL 320 C19		HW 039240508602	AKB03606BU
D							Rack Unit: 0U Incoming Mode: Top Feed Circuit Breaker: (6) 20A/2P Mounting Location: Dual-sided		MODEL	
C							Enduse Material: Aluminum Alloy Enduse Color: Black		PRODUCT CODE	
B						APISLOGIK PROPRIETARY AND CONFIDENTIAL INFORMATION This document is the property of APISLOGIK and contains proprietary information of APISLOGIK. This document is loaned on the express condition that neither it nor the information contain shall be disclosed to others without the express written consent of APISLOGIK. This document shall be returned to APISLOGIK upon its request.	INPUT: 200-240 V 3-PHASE, 3W+PE, 50/60Hz, 48A OUTPUT: 200-240 V AC, 16A PER BANK, 48A PER PHASE TOTAL C13: 12A PER OUTLET, 16A PER GANG		K10A1J7-48A0612A1829GE801-20T	
A	First edition	NAN LI	LQ LI	YH CHEN	8/5/2024					
REV.	DESCRIPTION	DRAWN	CHECKED	APPD	DATE				SHEET 2 OF 2	REV. A