

# Product Datasheet

**Product Name: Basic Rack PDU**

**SKU: AKB016002U**

**MODEL: K10ATG5-48A1812A1870GMS01-9QT**

**Product Code: K10ATG5-48A1812A1870GMS01-9QT**

## Overview

Basic PDU accepts power through one input cord and provides power distribution through several power outlets. Many varieties of all the input plugs, output receptacles, protect devices install methods, color and size are available to mix and match to meet your exact requirements.

## Features

### ■ Input and Outlets

Support IEC, NEMA, GB, UK standard, EU standard and other types of input plugs and output sockets to choose, Refer to the Output Configurations section on page 2 for the number of outlets and outlet types for each model.

### ■ Hydraulic Magnetic Circuit Breakers

Stable at Extreme Hot-swap temperatures (140°F/60°C). Provide respective protection for each branch of the PDU.

(Note: Hydraulic Magnetic Circuit Breakers is not available on all models)

### ■ Rack Mounting

Basic Rack PDU can provide bracket & peg for mounting.

## Specifications

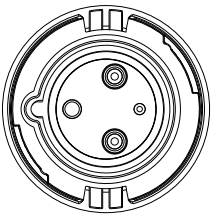
Input Parameters	
Input voltage	208 V AC;2W+G
Rate current (phase)	48A
Input frequency	50/60Hz
Power Load	9.984KW
Input plug	IEC 60309,60A,3 PIN PLUG
Input wire	70.92 in(1.8m) 3*4AWG
Output Parameters	
Output voltage	208 V AC
Rate current(phase)	48A
Output frequency	50/60Hz
Outlets	(18)IEC C13 (12)IEC C19
Protective Device	
Circuit breaker	(3)20A/2P
Physical Parameters	
Rack mount	0U
Shell color	Black
Shell material	Aluminum Alloy
Power input method	Bottom Feed
Mounting location	Dual-Sided
Mounting mode	Bracket/Peg
Dimensions(H*W*D)	76.36 in*2.19 in*2.09 (1939.5mm*55.5mm*53mm)
Net weight	17.6LBS (8KG)
Shipping dimensions(H*W*D)	82.68 in*3.43 in*4.53 in (2100mm*87mm*115mm)

<b>Environmental Parameters</b>	
Operating elevation	0-10000 ft(0-3000m)
Operation Temperature	14~140°F (-10~60℃)
Humidity(operation/storage)	5-95%RH, non-condensing
Storage Temperature	-4~158 °F (-20~70 °C)
Storage elevation	0-50000 ft(0-15000m)
<b>Compliance</b>	
Certification	UL

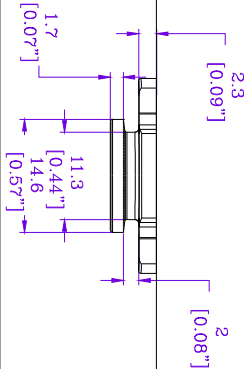
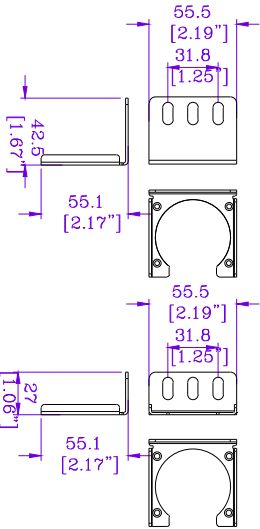
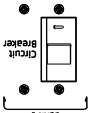
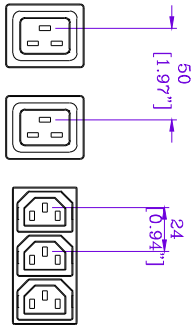
\* Product Characteristics subject to change without prior notice.

\* Disclaimer: This documentation is not intended as a substitute for and is not to be used for determining suitability or reliability of these products for specific user applications

<b>Version History</b>					
Version	Description	Draft	Review	Approval	Date
V1.2	First version	Jun Xiong	LQ Li	YH Chen	11/13/2023



(IEC 60309, 60A, 3 PIN PLUG -ENLARGED)

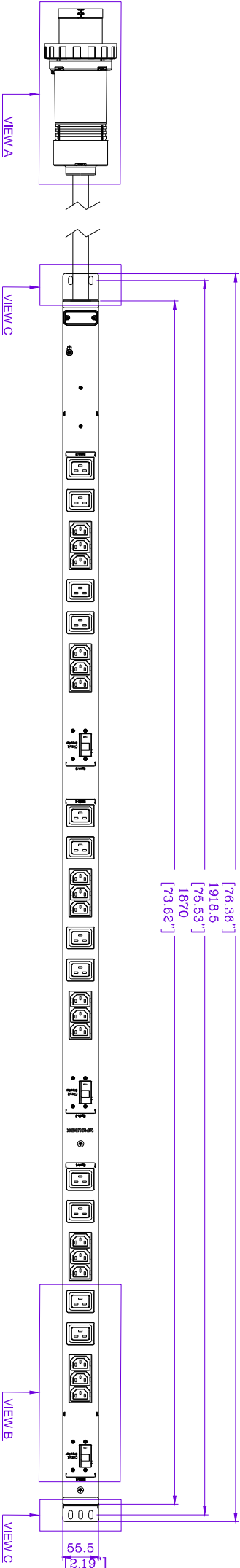


VIEW A

VIEW B

VIEW C

VIEW D

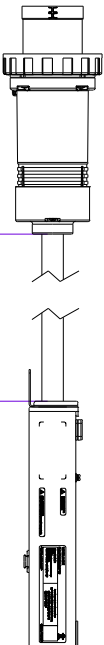


VIEW A

VIEW C

VIEW B

VIEW C



1800  
[70.87"]



1555  
[61.22"]

140  
[5.51"]

REV.	DESCRIPTION	DRAWN	CHECKEN	APP'D	DATE
A	First edition	Jun Xiong	LQ LI	YH Chen	11/13/2023
B					
C					
D					
E					

**NOTES:**  
1. INSTALLATION SHALL COMPLY WITH ALL APPLICABLE NATIONAL, STATE AND LOCAL CODES.  
2. PLEASE REFER TO PRODUCT DOCUMENTATION FOR FURTHER INFORMATION.  
3. UNLESS OTHERWISE SPECIFIED, ALL DIMENSIONS ARE IN MILLIMETERS (INCHES).

Product Name: Basic Rack PDU  
Input Cable: 70.92 in (1.8m) 3\*4AWG  
Outlet: (16) IEC C13  
(12) IEC C19

Rack Unit: 0U  
Incoming Mode: Bottom Feed  
Mounting Location: Dual-Sided  
Enclosure Color: Black

DWG NO.	SKU
HM-039231113301	AKB016002U

APISLOGIK PROPRIETARY AND CONFIDENTIAL INFORMATION

INPUT: 208 V AC; 3W-G 50/60Hz; 48A  
OUTPUT: 208 V AC; 16A PER BANK; 48A TOTAL  
C13: 12A PER OUTLET; 12A PER GANG  
C19: 16A PER OUTLET

MODEL  
K10ATG5-48A1812A18170GMS01-90T  
K10ATG5-48A1812A18170GMS01-90T

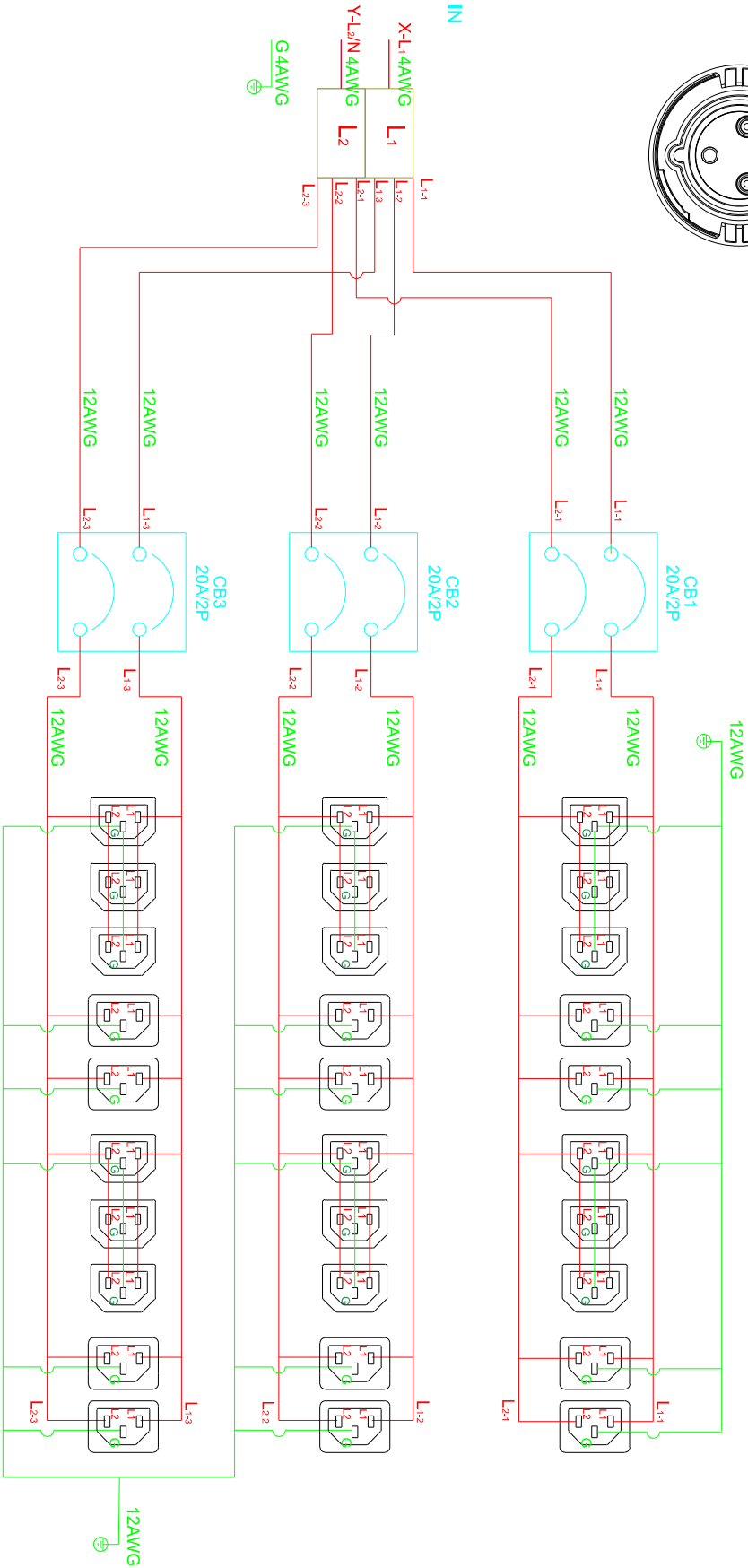
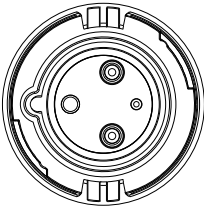


PRODUCT CODE  
K10ATG5-48A1812A18170GMS01-90T

DO NOT SCALE  
DRAWING

SHEET 1 OF 2  
REV. A

Symbol Interpretation		
XT	Terminal blocks	IN      Input
TA	Current transformer	OUT      Output
PA	Intelligent meter	F      Hot plug lightning protection
XS	jack	CB      Circuit breaker
PE	landing	S1/S2      Current transformer Input /output



Note: The color of the connecting line is only for reference to the phase pole, and the actual color is subject to the actual material.

REV.	DESCRIPTION	DRAWN	CHECKEN	APPD	DATE	NOTES:		Product Name Basic Rack PDU		APISLOGIK	
E						1.INSTALLATION SHALL COMPLY WITH ALL APPLICABLE NATIONAL, STATE AND LOCAL CODES.		Input Cable: 70.92 in (1.8m) 3*4AWG		Rack Unit: 0U	
D						2.PLEASE REFER TO PRODUCT DOCUMENTATION FOR FURTHER INFORMATION.		Output: (18) IEC C13		Incoming Mode: Bottom Feed	
C						3.UNLESS OTHERWISE SPECIFIED, ALL DIMENSIONS ARE IN MILLIMETERS (INCHES).		(12) IEC C19		Mounting Location: Dual-Sided	
B						APISLOGIK PROPRIETARY AND CONFIDENTIAL INFORMATION		Endlosure Material: Aluminum Alloy		Enclosure Color: Black	
A	First edition	Jun Xiong	LQ LI	YH Chen	11/13/2023	This document is the property of APISLOGIK and contains proprietary information of APISLOGIK. This document is banned on the express condition that neither it nor the information contain shall be disclosed to others without the express written consent of APISLOGIK and that the information shall be used by the recipient only as approved expressly by APISLOGIK. This document shall be returned to APISLOGIK upon its request.		INPUT: 208 V AC; 2W + G; 50/60Hz; 48A		OUTPUT: 208 V AC; 16A PER BANK; 48A TOTAL	
REV.	DESCRIPTION	DRAWN	CHECKEN	APPD	DATE			C13: 12A PER OUTLET; 12A PER GANG		C19: 16A PER OUTLET	
						DWG NO.		SKU		MODEL	
						K10ATG5-48A1812A1870GMS01-90T		AKB016002U		K10ATG5-48A1812A1870GMS01-90T	
						PRODUCT CODE		DO NOT SCALE		DRAWING	
						SHEET 2 OF 2		REV.		A	