

Product Datasheet

Product Name: Basic PDU

SKU:AKB013041U

MODEL:K10ATJ5-24A3606A1791EES01-2QT

Product Code:K10ATJ5-24A3606A1791EES01-2QT

Overview

The Apislogik Basic PDU provides rack power distribution via a single input with multiple output receptacles and distributes power from low amperage single-phase circuits to higher-power 3-phase solutions. There are various types of input plugs, output receptacles, and protective devices available for mixing and matching. Installation methods, colors, and sizes can be chosen to meet your specific requirements.

Features

■ Input

Support for IEC60309, NEMA, UK, SCHUKO, HARTING, TEC etc.

■ Output

Support for C13, C19, C39, NEMA, UK, SCHUKO, IEC self-locking socket.

■ Hydraulic magnetic circuit breaker

Stable operation in environments with a temperature of 140°F/60°C. Provides respective protection for each branch of output. (Note: Not all models provide hydraulic magnetic circuit breakers)

■ Hot-swap LED indicator lights

Customers can replace hot-swap LED indicator lights without powering off the system. (Note: Not all models have hot-swap LED indicator lights)

■ Mounting method

Toolless mounting peg and bracket mounting, two types of mounting options are available for selection.

Specifications

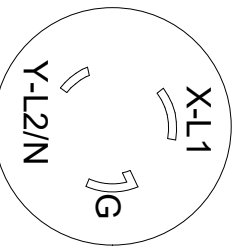
Input Parameters	
Input voltage	200-240 V AC
Max current(phase)	30A
Rate current (phase)	24A
Input frequency	50/60Hz
Power capacity	5KW
Input plug	NEMA L6-30P
Input wire	(118.11in) 3*10AWG
Output Parameters	
Output voltage	200-240 V AC
Max current(phase)	30A
Rate current(phase)	24A
Output frequency	50/60Hz
Outlets	(36) UL 320 C13 (6) UL 320 C19
Protective Device	
Circuit breaker	2*20A/2P
Physical Parameters	
Rack mount	0U
Shell color	Black
Shell material	Aluminum Alloy
Power input method	Top feed
Mounting location	Dual-sided
Mounting mode	Bracket / Peg
Dimensions(H*W*D)	70.51 in*2.19 in*1.93 in 1791 mm*55.5 mm*49 mm
Net weight	16.8 lb 7.6 kg
Shipping dimensions(H*W*D)	82.68 in*3.43 in*4.53 in 2100 mm*87 mm*115 mm
Environmental Parameters	
Operating elevation	0-10000 ft 0-3000 m
Operation Temperature	14°F~140 °F -10°C~60°C
Humidity(operation/storage)	5-95%RH, non-condensing
Storage Temperature	-4°F~158 °F -20°C~70 °C
Storage elevation	0-50000 ft 0-15000 m

Compliance	
Certification	UL、CUL、REACH、RoHS

* Product Characteristics subject to change without prior notice.

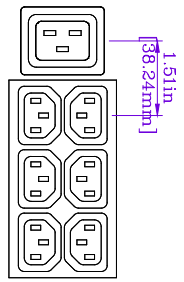
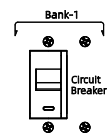
* Disclaimer: This documentation is not intended as a substitute for and is not to be used for determining suitability or reliability of these products for specific user applications

Version History					
Version	Description	Draft	Review	Approval	Date
V2.0	First version	NAN LI	LQ LI	YH CHEN	07/05/2024

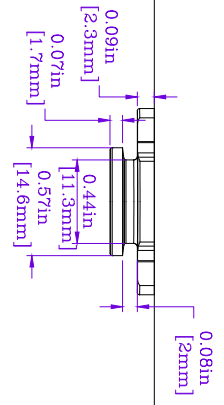


(NEMA L6-30P PLUG-ENLARGED)

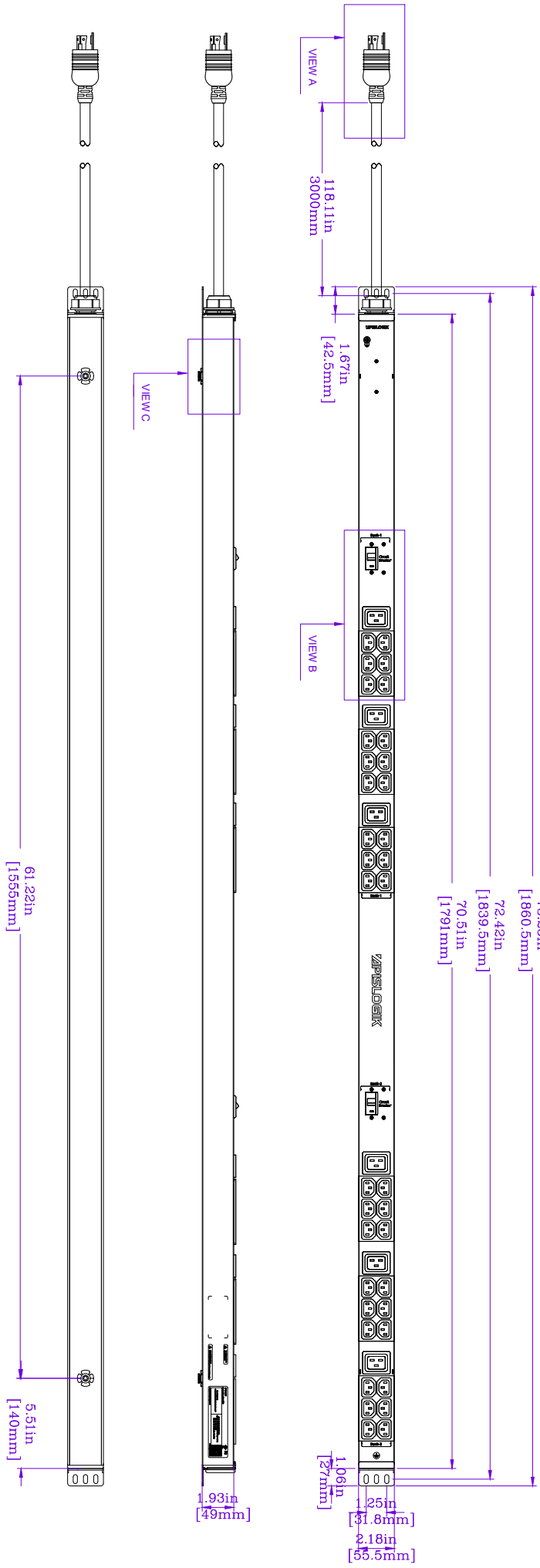
VIEW A



VIEW B

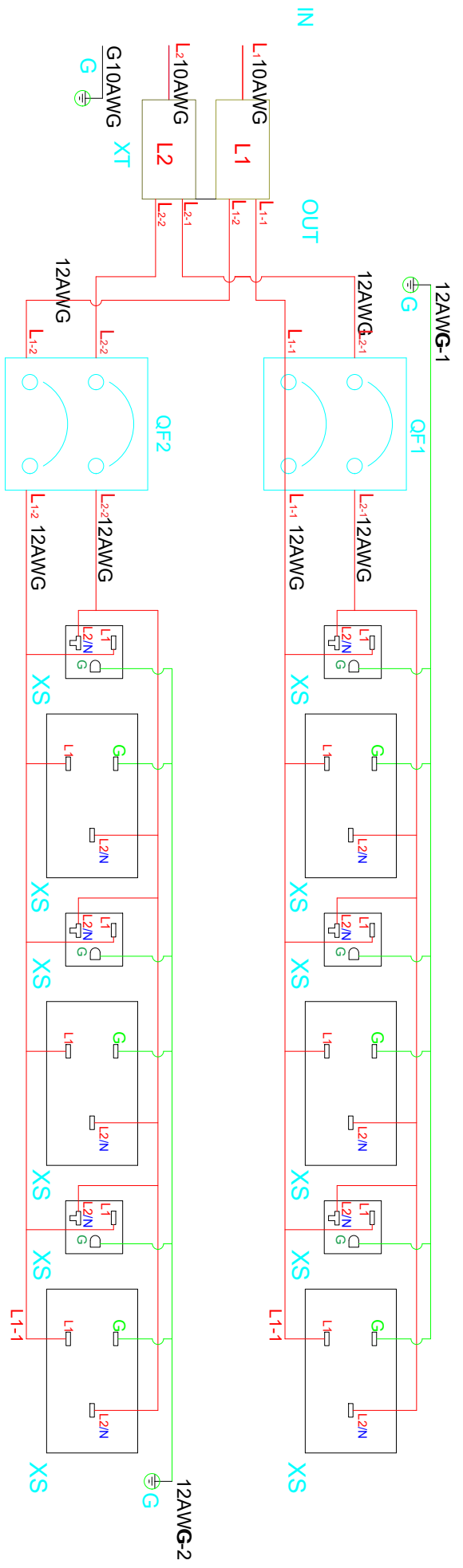


VIEW C



REV.	DESCRIPTION	DRAWN	CHECKEN	APPD.	DATE	NOTES:	Product Name: Basic PDU	SKU
E						1. INSTALLATION SHALL COMPLY WITH ALL APPLICABLE NATIONAL, STATE AND LOCAL CODES	Input Cable: 118.11 in 3" 10AWG	HW: 039240508609
D						2. PLEASE REFER TO PRODUCT DOCUMENTATION FOR FURTHER INFORMATION.	Outlet: (36) UL 320 C13	MODEL: K10ATJ5-24A3606A1791EES91-20T
C						3. UNLESS OTHERWISE SPECIFIED, ALL DIMENSIONS ARE IN INCHES (MILLIMETERS).	(6) UL 320 C19	PRODUCT CODE: K10ATJ5-24A3606A1791EES91-20T
B						APISLOGIK PROPRIETARY AND CONFIDENTIAL INFORMATION	Enduse Material: Aluminum Alloy	DO NOT SCALE DRAWING
A	First edition	NAN LI	LQ LI	YH CHEN	8/5/2024	This document is the property of APISLOGIK and contains proprietary information of APISLOGIK. This document is loaned on the express condition that neither it nor the information contain shall be disclosed to others without the express written consent of APISLOGIK. This document shall be returned to APISLOGIK upon its request.	INPUT: 200-240 V AC; 50/60Hz; 24A OUTPUT: 200-240 V AC; 16A PER BANK; 24A TOTAL C13: 12A PER OUTLET; 16A PER GANG	APISLOGIK
REV.	DESCRIPTION	DRAWN	CHECKEN	APPD.	DATE			SHEET 1 OF 2

Symbol Interpretation			
XT	Terminal blocks	IN	Input
TA	Current transformer	OUT	Output
PA	Intelligent meter	F	Hot plug lightning protection
XS	jack	CB	Circuit breaker
PE	landing	S1/S2	Current transformer Input/output



Note: The color of the connecting line is only for reference to the phase pole, and the actual color is subject to the actual material.

REV.	DESCRIPTION	DRAWN	CHECKEN	APPD	DATE
A	First edition	NAN LI	LQ LI	YH CHEN	8/5/2024
B					
C					
D					
E					

NOTES:
 1. INSTALLATION SHALL COMPLY WITH ALL APPLICABLE NATIONAL, STATE AND LOCAL CODES.
 2. PLEASE REFER TO PRODUCT DOCUMENTATION FOR FURTHER INFORMATION.
 3. UNLESS OTHERWISE SPECIFIED, ALL DIMENSIONS ARE IN INCHES (MILLIMETERS).
 APISLOGIK PROPRIETARY AND CONFIDENTIAL INFORMATION
 This document is the property of APISLOGIK and contains proprietary information of APISLOGIK. This document is loaned on the express condition that neither it nor the information contained herein shall be disclosed to others without the express written consent of APISLOGIK and that the information shall be used by the recipient only as approved expressly by APISLOGIK. This document shall be returned to APISLOGIK upon its request.

Product Name: Basic PDU
 Input Cable: 118 11 in 3*10AWG
 Output: (36) UL 320 C13
 (6) UL 320 C19
 Rack Unit: 0U
 Incoming Mode: Top Feed
 Circuit Breaker: (2) 20A 2P
 Mounting Location: Dual-sided
 Enduse Material: Aluminum Alloy
 Enduse Color: Black
 INPUT: 200-240 V AC, 50/60Hz, 24A
 OUTPUT: 200-240 V AC, 16A PER BANK, 24A TOTAL
 C19: 16A PER OUTLET
 C13: 12A PER OUTLET, 16A PER GANG

APISLOGIK

DWG NO.	SKU
MODEL	AKB013041U
PRODUCT CODE	K10ATJ5-24A3606A1791EES01-20T

DO NOT SCALE DRAWING

SHEET 2 OF 2 REV. A